

URBAN ENGINEERS | AVIATION





A strategically designed airport is more than just a transportation hub; it's a catalyst for economic development, connectivity, and overall community well-being. It plays a vital role in shaping the success and sustainability of the regions it serves. Urban has demonstrated a consistent track record of excellence by delivering comprehensive airport planning, design, and construction management services since its founding.

We provide services for:

- Corporate and General Aviation
- Landside
- Airside
- Design-Build
- CM/CI
- Terminals and Facilities

Delta Airfield Reconfiguration Program LaGuardia Airport (LGA)

**Port Authority of New York and New Jersey
Queens, NY**

The Delta Airfield Reconfiguration Program at LaGuardia Airport (LGA), led by Urban, creates a streamlined and improved travel experience through its \$4 billion project. It includes a new 37-gate terminal paired with dual taxiways to minimize taxi time and larger gate areas featuring enhanced concessions for a more enjoyable layover. The efficiency extends to the airport's roadways, ensuring a smooth flow for travelers.

Urban, as the prime consultant, provides expertise in construction management and inspection services, coordinating construction activities with ongoing facility operations and upholding environmental standards and safety.

Click [here](#) to learn more about the project.





Philadelphia International Airport (PHL), American Airlines Terminal F

**City of Philadelphia Division of Aviation
Philadelphia, PA**

Philadelphia International Airport (PHL) and American Airlines collaborated on an exciting initiative to enhance Terminal F, the dedicated concourse for the airline's commuter and regional jet operations. The original Terminal, completed in 2001, required changes in security in a post-9/11 atmosphere. With the increased use of commuter services, there was a need to improve safety, baggage claim, and passenger processing.

Urban was part of a team that carried out the project from planning and design through implementation. Urban was responsible for the new facility's airside and landside design. The apron, designed by Urban, will accommodate PHL's commuter market by providing 38 gates for regional jets.

Click [here](#) to learn more about the project.

Los Angeles International Airport (LAX) Terminal Development and Improvement Program

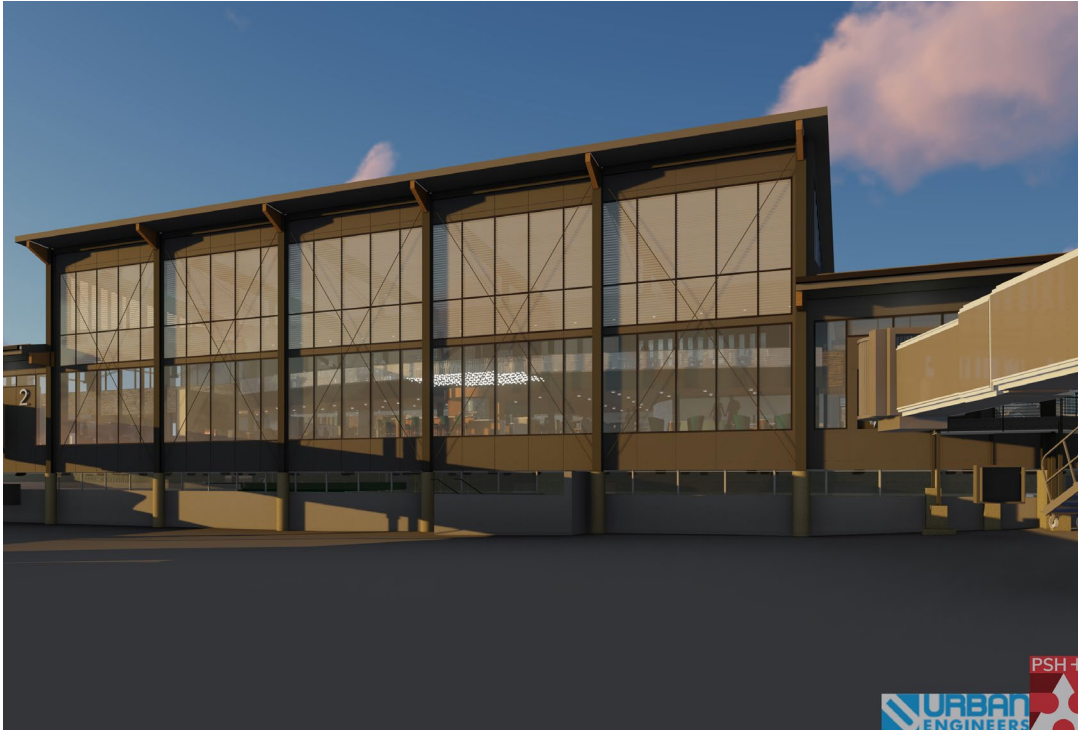
Los Angeles World Airports
Los Angeles, CA

Los Angeles International Airport (LAX), currently the world's third-busiest airport, is in the final stages of a significant \$14.5 billion capital improvement program that spans all nine passenger terminals and includes the construction of new facilities. Urban, a key player in this initiative, is providing staff augmentation and senior-level construction management services to effectively oversee the terminal development program.

Urban's responsibilities encompass the full-time supervision of 11 project managers, management of the design phase, procurement phase services, and comprehensive construction management from the project's initiation to its close-out. Specifically focused on terminal modernization, Urban serves as the delivery lead, playing a significant role in the successful execution of the \$5 billion terminal development and improvement program.

Click [here](#) to learn more about the project.





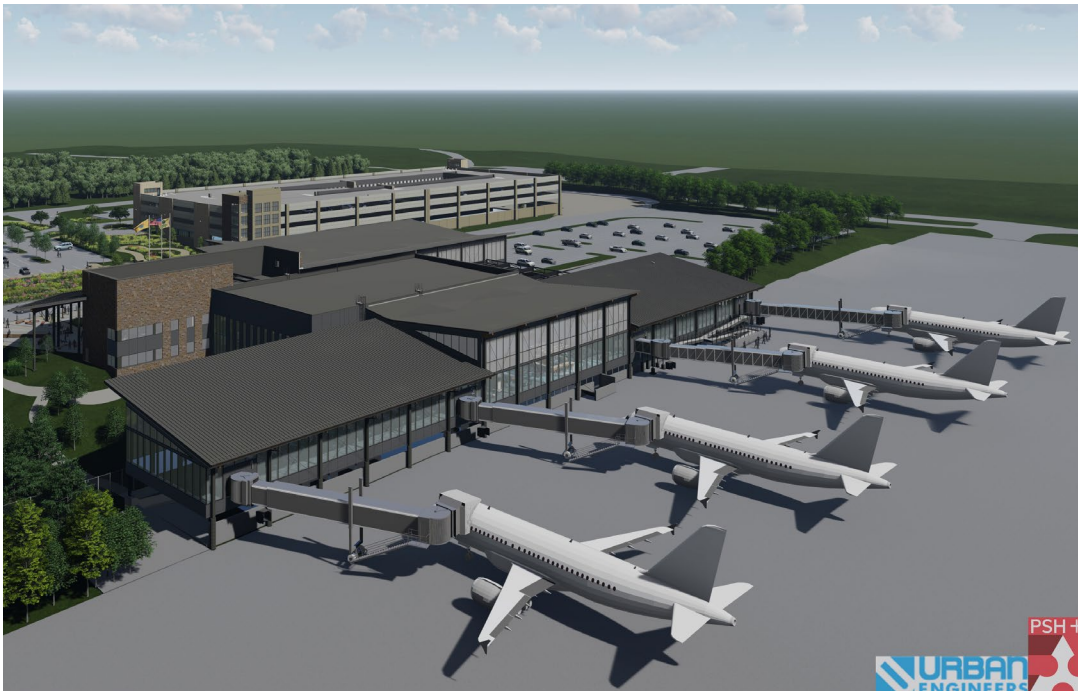
Trenton-Mercer Airport (TTN) Passenger Terminal

**County of Mercer, New Jersey
Ewing, NJ**

Since the resumption of Air Carrier service in 2013, Trenton-Mercer Airport (TTN) has been actively undertaking various airfield capital improvement projects. Positioned strategically between Philadelphia and New York City, TTN is an economic catalyst for expansion in the Mercer County region of New Jersey. Urban plays a key role in supporting the airport's growth by providing engineering services through a 5-year on-call contract.

Our involvement includes aiding Trenton-Mercer Airport in completing key airfield capital improvements projects such as a master plan update, runway rehabilitation, design of a parallel taxiway, and the development of a new baggage claim facility. These initiatives are integral to enhancing the airport's infrastructure and contributing to its overall advancement.

Click [here](#) to learn more about the project.



Runway 27L Extension at Philadelphia International Airport

**City of Philadelphia, Division of Aviation
Philadelphia, PA**

To enhance operational efficiency at Philadelphia International Airport (PHL), Urban led the design of a 1,500-foot-long extension to Runway 27L. The carefully phased project allowed for the continued use of Runway 9R-27L and all taxiways throughout construction, with a significant portion of the work conducted during nighttime hours.

This extension was a crucial component of a broader initiative involving the construction of 9,600 feet of taxiways. Safety enhancements were a priority, encompassing the installation of LED Centerline lighting on all new taxiways for SMGS routing, the replacement of incandescent centerline lighting with LED lights on the runway, the introduction of new guidance signs for taxiways, and updates to other signage, including new distance remaining signs. These upgrades enhance pilot visibility and runway safety, contributing to the airport's ongoing commitment to excellence.

Click [here](#) to learn more about the project.





Newark Liberty International Airport (EWR) ConRAC Design

**Port Authority of New York
and New Jersey | Newark, NJ**

Newark Liberty International Airport (EWR) encountered a significant challenge in constructing a public garage and rental car facility with over 6,000 vehicle spaces. The site's complexity arose from buried utility lines managed by various owners and agencies. The redevelopment project involved a complete site overhaul, including creating a new circulation roadway network, parking garage access points, employee parking areas, fuel delivery facilities, and trash compactor locations—all strategically coordinated around the existing elevated air train tracks.

Urban took on the role of the site/civil and utility engineer-of-record for this design-build project. Our team, using 3D models integrated into the building and site, navigated the complexities of the facility. This approach helped streamline the process, addressing the challenges caused by the site's workings and contributing to the successful development of an updated public garage and rental car facility at EWR.

Click [here](#) to learn more about the project.



Terminal and ConRAC Design at Bradley International Airport

Connecticut Airport Authority Windsor Locks, CT

The Connecticut Airport Authority (CAA) is overseeing a significant expansion and modernization effort at Bradley International Airport in Windsor Locks, CT, with the goal of doubling its capacity. The estimated \$930 million New West Terminal program is intended to handle projected increases in travel.

Urban is providing preliminary and schematic civil engineering design services for the new 19-gate West Terminal, which will replace the previously demolished Terminal B in 2015. The new West Terminal will house essential functions such as ticketing, baggage screening, baggage claim, passenger hold rooms, and dedicated areas for airline and airport operations. The project aims to enhance Bradley International Airport's capabilities to meet the growing air travel demands.

Click [here](#) to learn more about the project.





Philadelphia International Airport (PHL) American Airlines Ground Service Equipment Facility

American Airlines Philadelphia, PA

American Airlines aimed to bring innovation to the ground level by upgrading its primary maintenance facility at Philadelphia International Airport (PHL). Their vision involved creating a distinctive and sustainable Ground Service Equipment (GSE) facility.

In collaboration with an architectural firm, Urban took on the role of providing comprehensive services, including project management, civil and site design, cost estimating, MEP and fire protection, foundation design, structural design, and permitting. The \$22 million state-of-the-art GSE facility, located at the west end of PHL, spans 57,000 square feet and has achieved LEED Silver certification. This cutting-edge facility is equipped to handle repairs and maintenance for 770 motorized pieces of equipment and 1,200 non-motorized pieces, servicing approximately 800 daily departures and arrivals for American Airlines.

Click [here](#) to learn more about the project.





Select Client List:

- The Port Authority of New York and New Jersey
- Los Angeles World Airports
- City of Philadelphia, PA
- City of Erie, PA
- Buffalo Niagara Transportation Authority
- Metropolitan Washington Airports Authority
- Susquehanna Area Regional Airports Authority
- Connecticut Department of Transportation
- South Jersey Transportation Authority
- Maryland Aviation Administration
- City of Dallas and Dallas Airport System
- Dallas Ft Worth International Airport

Delta Airfield Reconfiguration Program at LaGuardia



College Park Airport On-Call



Our Team

A portrait of Christopher Gubeno, a man with dark hair, wearing a white button-down shirt, sitting at a desk with architectural plans in front of him. The background shows a city skyline through a window.

Christopher Gubeno, PE

VP, Market Leader for Aviation

cggubeno@urbanengineers.com

Learn more about Christopher [HERE](#)

A portrait of Dale Russell, a man with grey hair, wearing a blue button-down shirt and a grey blazer, standing outdoors in front of trees.

Dale Russell, PE

VP, Practice Leader for Aviation

drussell@urbanengineers.com

Learn more about Dale [HERE](#)

A portrait of Eric DeDominicis, a man with dark hair, wearing a dark suit jacket over a light blue shirt, standing outdoors in front of a brick building.

Eric DeDominicis, PE

VP, Deputy Practice Leader
for Aviation - Mid-Atlantic

ejdedominicis@urbanengineers.com

Learn more about Eric [HERE](#)

A portrait of Patrick Williams, a man with light hair, wearing a blue checkered shirt and a dark tie, standing outdoors in front of green foliage.

Patrick Williams, PE, LEED AP

VP, Southwest Regional Manager

pjwilliams@urbanengineers.com

Learn more about Patrick [HERE](#)



urbanengineers.com

